

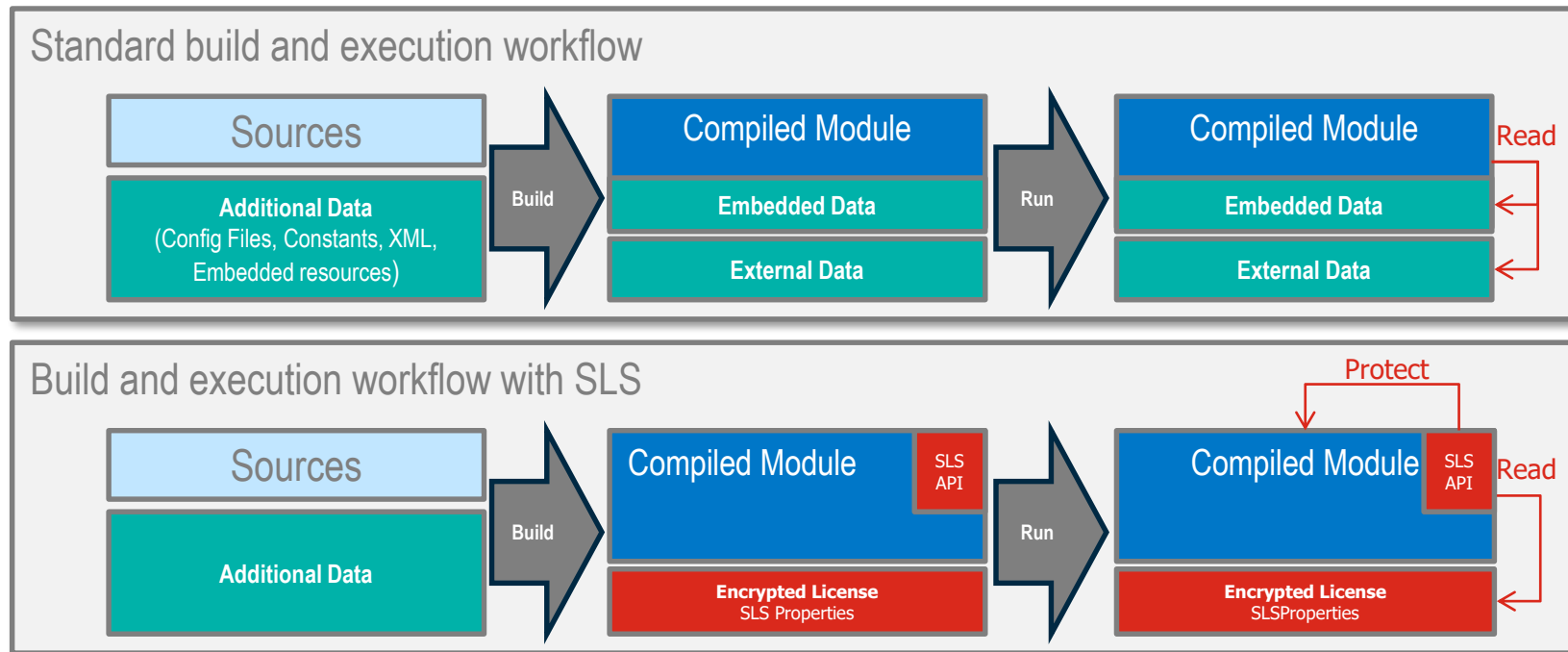
SLS

Simple Licensing Solution



Overview

How does SLS work



Overview

SLS: Why and How

► SLS Protection

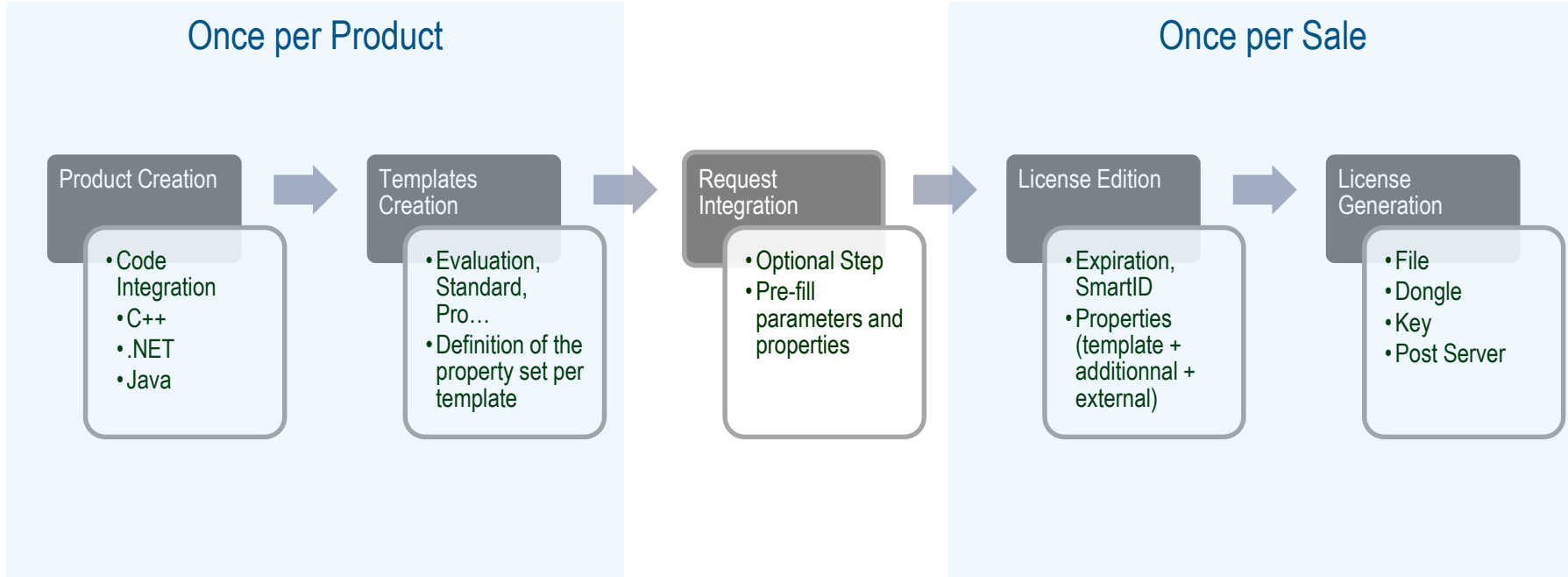
- ▷ Why: Because you cannot control what your end user will do with your application. Reverse engineering, debugging, decompiling...
- ▷ How: Through various validations, SLS will ensure your application is not compromised.

► SLS Properties

- ▷ Why: Because even the smartest protection can be broken.
- ▷ How: The use of SLS Properties is not mandatory. However if you use them, your software will not work without a valid license, even if all the software protections have been broken.

Integration Workflow

Using SLS Manager

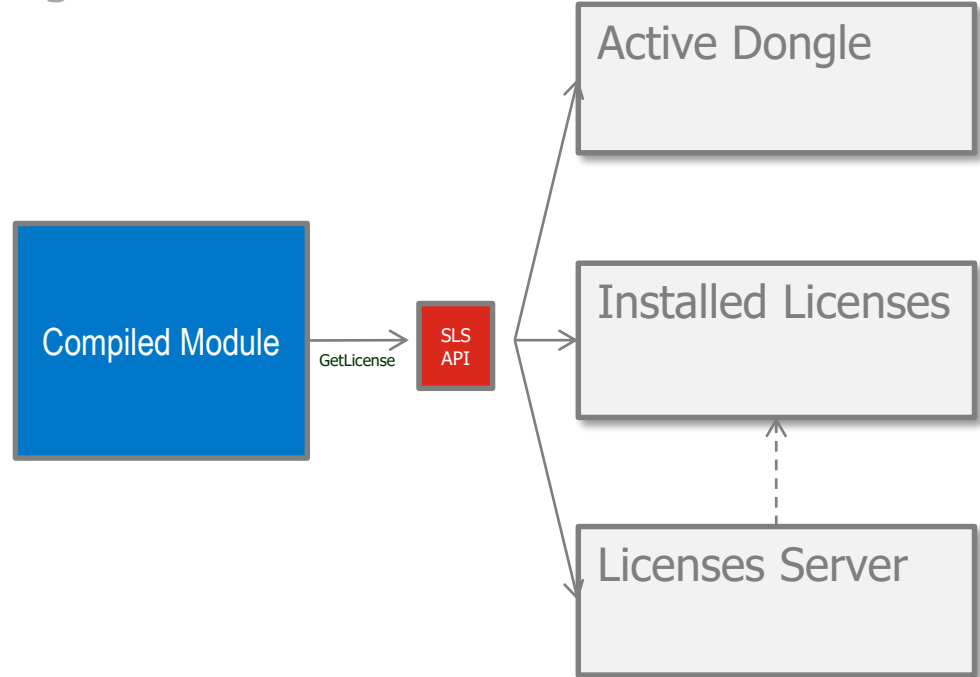


SLS License

Content

License Content	
Encrypted License Internal Parameters	
Encrypted Vault	
Name	Value
MyIntParam	10
AppTitle	A neat app
AppConfig	<config>... </config>
...	...

Usage



SLS API

Features

- ▶ Checks if a valid license is available (installed, dongle, web)
- ▶ Retrieves data from the license vault
- ▶ Ensures the application is not compromised
 - ▷ Debugger presence checks
 - ▷ Memory Jamming
 - ▷ Application integrity checks
- ▶ Notifies the compiled module, and take action if necessary

Hardware SmartID

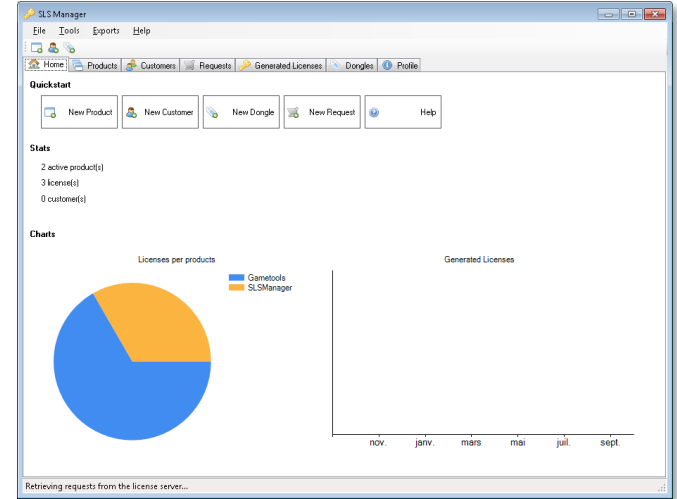
Hardware attached licenses, but with a bit of flexibility

- ▶ In order to avoid license duplication, licenses are tied to an hardware ID as soon as they are installed.
- ▶ This ID uniquely identify a machine, and is created from internal piece of hardware
- ▶ However, the comparison of hardware ID is tolerant, and allows hardware modification
- ▶ **As a result, even if your end user decides to upgrade his computer, your software will continue to work**

SLS Manager

Overview

- ▶ Manages Products, Dongles, Requests, Customers and Licenses
- ▶ Basic activity reporting
- ▶ Integration
 - ▷ Code insertion helpers
 - ▷ Database import & export
- ▶ Licenses generation
 - ▷ Templates management
 - ▷ Direct generation, or generation through a request



SLSCmd

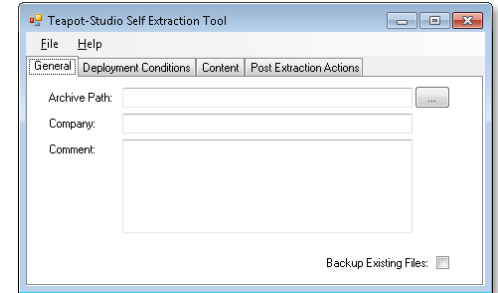
Overview

- ▶ SLSCmd is a command line tool you can use (and distribute)
- ▶ It allows simple operations on a local computer, including:
 - ▷ Available licenses listing
 - ▷ License installation
 - ▷ License revocation
 - ▷ License request generation (request on a local file, or directly sent to the server)

SLS SelfExtractor

Overview

- ▶ Create self extracting packages
- ▶ Conditional extraction
 - ▷ Extract only if a set of files are already present (Patch)
 - ▷ Extract only if a license is available
- ▶ Backup Mode
 - ▷ Allows to rollback the extraction (Patch)



Thank you